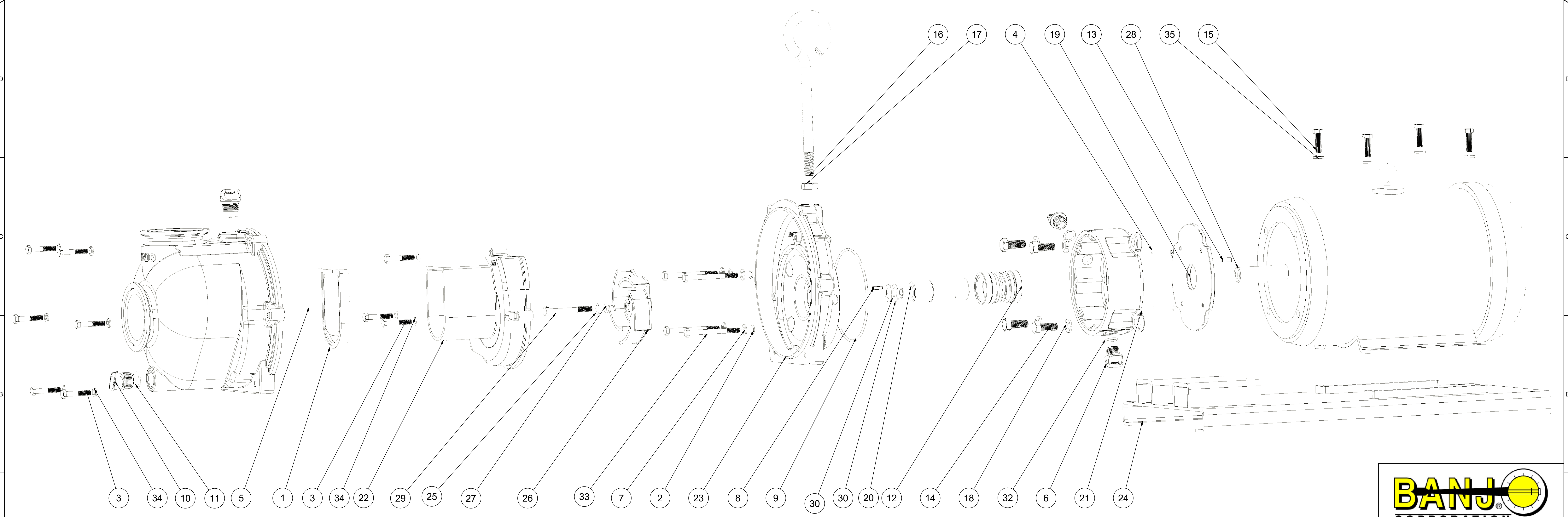


Parts List			
ITEM	QTY	PART NUMBER	DESCRIPTION
1	1	12705	PUMP CHECKVALVE, EPDM
2	4	12709	#13 O-RING, EPDM
3	9	12715A	5/16-24 X 1 3/4" HHCS WITH TORQ-PATCH
4	4	12717	#11 O-RING, EPDM
5	1	12719A	#375 O-RING, EPDM
6	2	12777	1/2" DRAIN PLUG
7	4	12901	5/16" FLAT WASHER
8	1	12902A	3/16" SQ. X 5/8" KEY
9	1	13719	#256 O-RING, EPDM
10	2	13777	3/4" DRAIN PLUG
11	2	13778	#119 O-RING, EPDM
12	1	15035E	MECH. SEAL ASSY, EPDM
13	1	16901	1/4" SQ. X 3/4" KEY
14	4	17449	1/2-13 X 1 1/4" HHCS
15	4	17704	3/8-16 X 1 1/4" HHCS
16	1	18033	PUMP HANDLE
17	1	18034	5/8-11 JAM NUT
18	4	18058	1/2" LOCKWASHER
19	1	19001	RES. BACKING PLATE
20	1	19055	ADAPTER SHAFT
21	1	19201W	3" WET SEAL RESERVOIR
22	1	19702	3" CI PUMP VOLUTE
23	1	19703W	REAR BRACKET
24	1	19741	BASE PLATE
25	1	19766	3/8" FLAT WASHER
26	1	19772SS	3" CI PUMP IMPELLER, 316 SS
27	1	A204	#204 O-RING, EPDM
28	1	BEM10-100	10 HP ELEC. MTR.
29	1	BF311	3/8-16 X 3" HHCS
30	2	CV10175	GASKET, EPDM
31	1	KK-57	WET SEAL WARNING TAG (N/S)
31	1	M19712X	3" CI MNFLD PUMP BODY
32	2	UV15163	#114 O-RING, EPDM
33	4	V10117	5/16 - 18 X 3 1/2" HHCS
34	9	V10118	5/16" LOCKWASHER
35	4	V20018	3/8" LOCKWASHER



THIS DRAWING AND ALL INFORMATION CONTAINED THEREON ARE THE EXCLUSIVE PROPERTY OF BANJO CORPORATION.

BANJO CORPORATION
 150 BANJO DRIVE, CRAWFORDSVILLE, IN 47933
 WEB SITE: WWW.BANJOCORP.COM
 E-MAIL: SALES1@BANJOCORP.COM

UNLESS SPECIFICALLY NOTED, THIS DRAWING AND ITEMS SHOWN ON THIS DRAWING ARE SUBJECT TO CHANGE AT ANY TIME.

DESCRIPTION
3" CAST IRON WET SEAL PUMP
 PART NUMBER
M332PIE10W