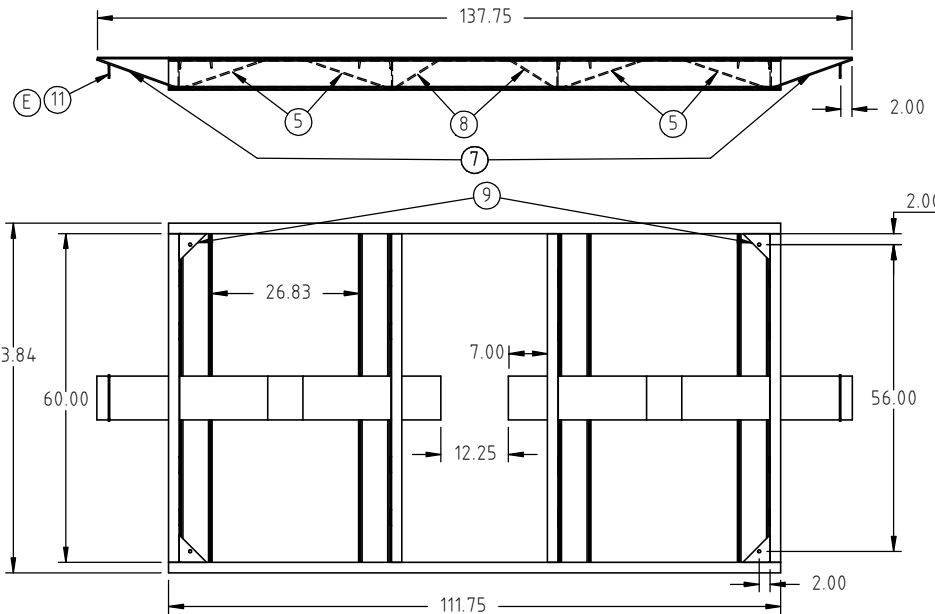
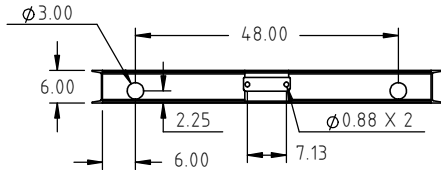
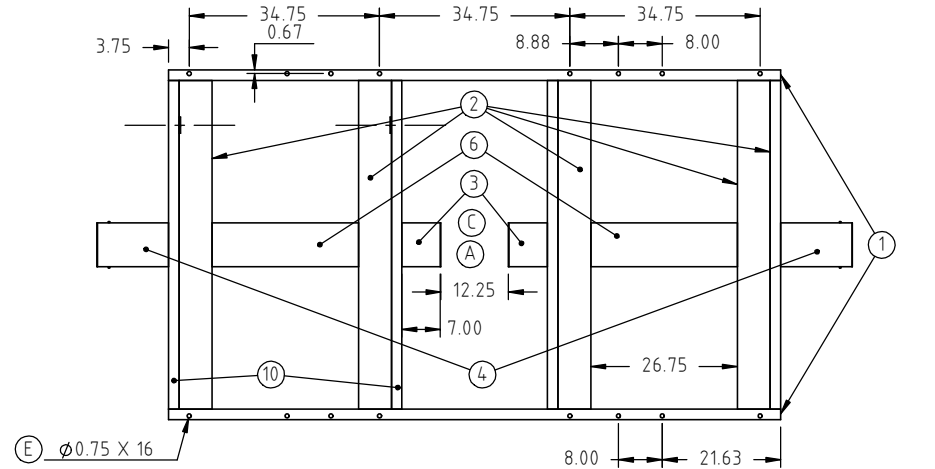


Copyright. All information furnished within this document, electronic file or design correspondence is the property of Den Hartog industries, Inc. and shall not be used, disclosed to others or copied without the expressed written consent of Den Hartog Industries, Inc.

KEY	PART NUMBER	DESCRIPTION	QTY.
1	FS1750-SK-1	SIDE CHANNEL (HOLES)	2
2	FS1750-SK-2	SIDE CHANNEL	6
3	FS1750-SK-3	TOP SUPPORT PLATE-SMALL	2
4	FS1750-SK-4	TOP SUPPORT PLATE	2
5	FS1750-SK-5	BASE SUPPORT PLATE-LARGE	4
6	FS1750-SK-6	TOP SUPPORT PLATE-LARGE	2
7	FS1750-SK-7	BASE SUPPORT PLATE	2
8	FS1750-SK-8	BASE SUPPORT PLATE- SMALL	2
9	12411	5" X 5" GUSSET	4
10	FS1750-SK-9	CHANNEL	2
11	13201	PLATE, POWDER COATING	2



E	POWDER COATING PLATE ADDED, WEIGHT/ FINISH ADDED. $\phi 0.75$ WAS $\phi 0.69$ .	ADH 8/2/12	2465
D	COMPONENT INFORMATION ADDED TO TABLE DRAWING TEMPLATE UPDATED.	ADH 3/27/09	1828
C	12.25 WAS 12.74	ADH 2/18/08	1623
B	CHANGED RETAINING PLATE HOLES	DHJ 11/5/07	1499
A	CHANGE OPENING FOR REVISED SUMP	DHJ 10/25/07	
REV	DESCRIPTION	BY / DATE	CCN

DRAWN / DATE	MATERIAL
DHJ 9/6/07	
APPRD. / DATE	
REH 9/17/07	

NOTES:
SHOT WEIGHT:
SHIPPING WEIGHT:
WEIGHT 604.00 LBS.
FINISH: POWDER COATING, BLACK TILE, 40012

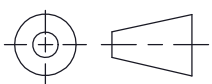


**Den Hartog**  
INDUSTRIES, INC.

*Acra Roto-Mold Injection Molding Blow Molding Sowjey*

4010 HOSPERS DRIVE S. BOX 425, HOSPERS, IOWA 51238-0421

DESCRIPTION	SKID FOR 1750 GALLON LEG TANK	
SCALE	N.S.	PART NO. FS1750-SK

ALL DIMENSIONS ARE IN DECIMAL INCHES TOLERANCES UNLESS OTHERWISE SPECIFIED		THIRD ANGLE PROJECTION ANSI 14.5M
POLYETHYLENE	METAL DECIMAL $\pm .125$ " FRACTION $\pm 1/4$ " ANGLE $\pm 1^\circ$	
$\pm 1\%$ @ 68°F		