



CS-155RG

Cast Iron Wet-Seal 1-1/2" x 1-1/4" Centrifugal Spray Pump

Installation and Operation Manual

WARNING: USE OF THIS PRODUCT FOR ANY PURPOSES OTHER THAN ITS ORIGINAL INTENT, ABUSE OF THE PRODUCT, AND/OR MODIFICATION TO THE ORIGINAL PRODUCT IS STRICTLY PROHIBITED BY JOHN BLUE COMPANY. JOHN BLUE COMPANY RESERVES THE RIGHT TO DENY WARRANTY OR LIABILITY CLAIMS IN ANY/ALL SITUATIONS INVOLVING MISUSE, ABUSE OR MODIFICATION.

THE ORIGINAL INTENT OF THIS PRODUCT DOES **NOT** INCLUDE USE WHERE THE MAXIMUM ALLOWED PRESSURE OR TEMPERATURE IS EXCEEDED, AND IT DOES **NOT** INCLUDE APPLICATIONS UTILIZING FLUIDS THAT ARE NOT COMPATIBLE WITH THE PRODUCT'S COMPONENT MATERIALS. DO NOT USE THIS PRODUCT WITH FLAMMABLE OR COMBUSTIBLE FLUIDS SUCH AS GASOLINE, KEROSENE, DIESEL, ETC... FAILURE TO FOLLOW THIS NOTICE MAY RESULT IN SERIOUS INJURY AND/OR PROPERTY DAMAGE AND WILL VOID THE PRODUCT WARRANTY. IF IN DOUBT ABOUT YOUR APPLICATION, CONTACT YOUR STOCKING DEALER OR THE JOHN BLUE TECHNICAL STAFF AT 1-800-253-2583.

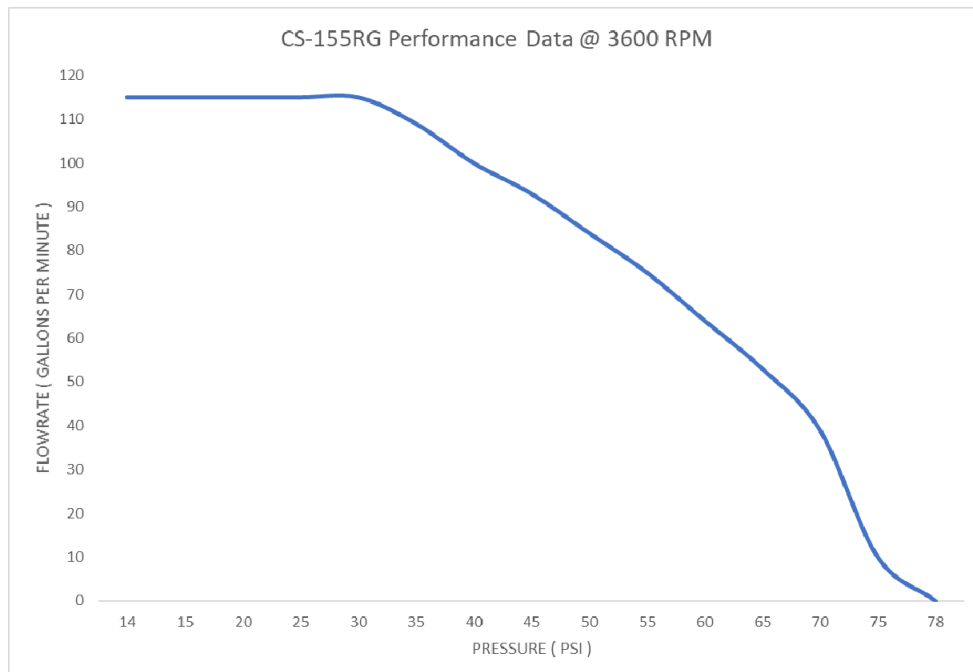
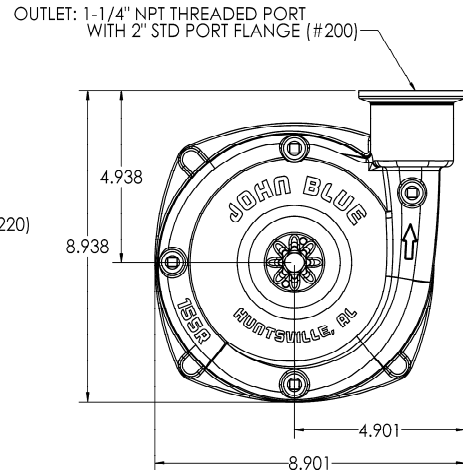
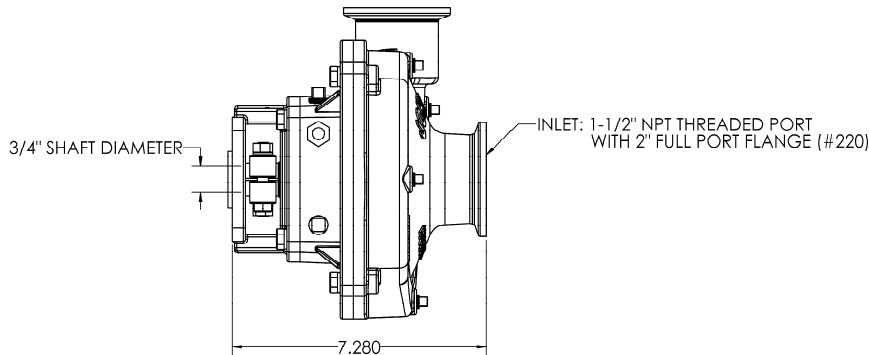
WARNING: This product can expose you to certain chemicals, which are known to the State of California to cause cancer or birth defects or other reproductive harm. For more information go to: www.P65Warnings.ca.gov.

SAFETY PRECAUTIONS: EQUIPMENT SHOULD BE OPERATED BY RESPONSIBLE PEOPLE. A CAREFUL OPERATOR IS THE BEST INSURANCE AGAINST AN ACCIDENT. FILL SYSTEM WITH WATER FIRST AND CHECK FOR LEAKS – REPLACE HOSES WHEN WORN OR CRACKED.

The CS-155 Centrifugal spray pump is available in a Gas Engine Drive configuration:

Pump Specifications and Performance:

- Max flow: 115 gpm @ 3600 RPM
- Max pressure: 78 psi @ 3600 RPM
- Shaft Size: 3/4" Inner Diameter
- Pump Port size: 1-1/2" FPT & 220 Flange Inlet
1-1/4" FPT & 200 Flange Outlet



Installation:

The CS-155RG pump is configured for use with a Honda GX-160 gas engine (John Blue Part Number: 113798-01). The pump can also be purchased assembled to the Honda engine (John Blue Part Number: CS-155RG-5H).

**Note that any plumbing must be supported so that its weight does not hang off of the pump – this will void the warranty.

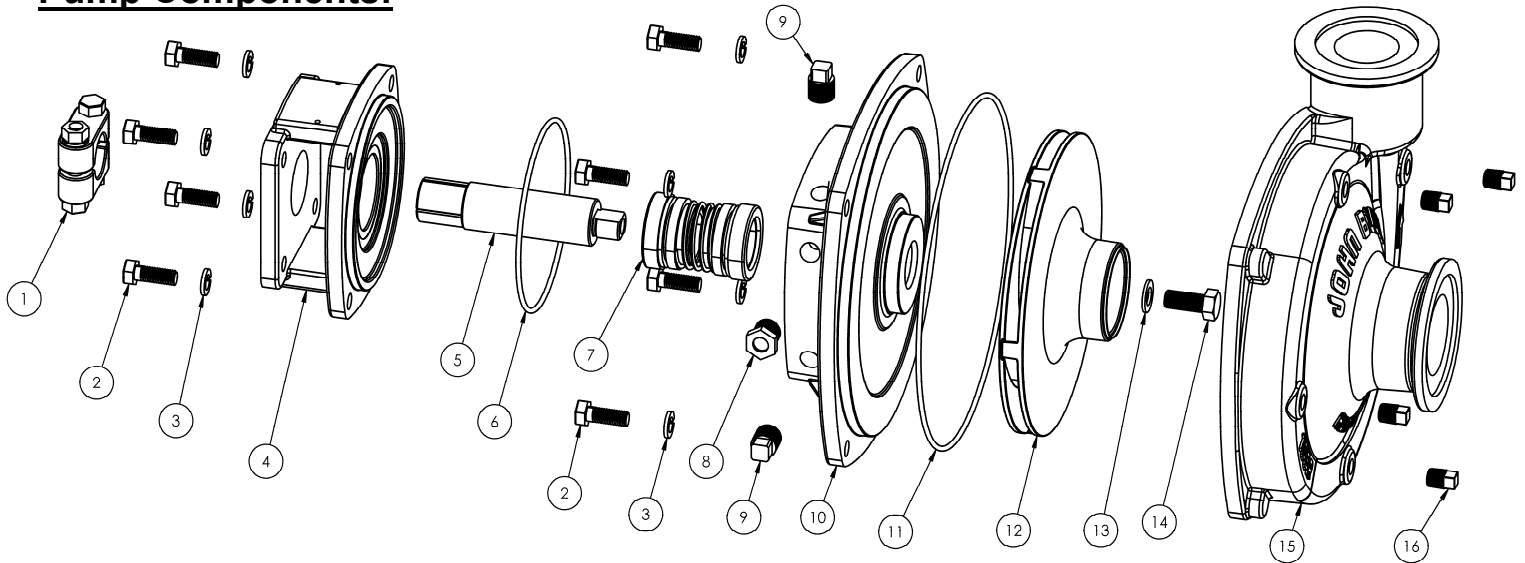
Storage:

After use, flush the pump with a solution that will neutralize the fluid you have been pumping, and then drain. *Use RV Antifreeze for Storage.*

Maintenance:

Inspect the seal reservoir fluid level using the sight window – the fluid level should be above the middle of the window. If the fluid is dirty, drain the pump by vacuum or turning upside down, then replace with 50/50 premixed ethylene glycol antifreeze. If fluid is cloudy, impeller side seal may be leaking.

Pump Components:



ITEM NO.	PART NUMBER	DESCRIPTION	QTY.
1	S-3607S	SHAFT CLAMP ASSEMBLY	1
2	91013	5/16-18 X 7/8 HHMB	8
3	93023	5/16 LOCK WASHER	8
4	116465-01	GAS ENGINE ADAPTER	1
5	116552-01	IMPELLER SHAFT	1
6	116467-01	-155 BUNA O-RING	1
7	S-3565-V	SHAFT SEAL ASSEMBLY	1
8	116384-01	1/4" NPT SIGHT WINDOW	1
9	C-431-B	1/4 NPT PLUG	2
10	116464-01	PUMP BACKPLATE	1
11	116466-01	-169 VITON O-RING	1
12	116553-91	IMPELLER ASSEMBLY - POLY	1
13	54-9003	3/8 FLAT WASHER	1
14	90649	3/8-24 X 7/8" HHCS, STAINLESS	1
15	116462-01R	PUMP VOLUTE	1
16	A-29	1/8 NPT PLUG	4

Pump Troubleshooting:

ISSUE	PROBABLE CAUSE
Pump makes rattling noise while running	Cavitation or pump starvation (suction lift is too high or the inlet line is too restrictive)
Reduced pump output or pressure	Clogged impeller or inlet piping (including strainer)
	Leaks in suction line or at inlet gasket
	Collapsed suction line
	Trapped air in sections of suction line
	Suction lift is too great – flooded inlet recommended
	Discharge lift is too great
	Worn or damaged parts (impeller or volute)
Pump fails to prime or slow prime	Leaks in suction line or at inlet gasket
	Suction lift is too great – flooded inlet recommended
	Collapsed suction line
Seal reservoir fluid changes level	Leak at the input shaft seal if level is low
	Leak at the impeller side seal if level is high

Note to the Owner

The pump should be inspected annually for any wear or damage to any of the components in order to ensure proper operation. Enter the date of installation in the space provided for future reference. This information will be required for ordering replacement parts or servicing your pump.

Our engineering department constantly improves its products. We reserve the right to make design and specification changes without notice.

DATE OF INSTALLATION: _____

LIMITED WARRANTY

THIS WARRANTY IS IN LIEU OF ALL OTHER WRITTEN OR EXPRESS WARRANTIES AND REPRESENTATIONS. ANY IMPLIED WARRANTIES INCLUDING MERCHANTABILITY OR FITNESS FOR ANY PARTICULAR PURPOSE ARE EXPRESSLY LIMITED TO THIS WRITTEN WARRANTY. JOHN BLUE COMPANY SHALL NOT BE LIABLE FOR CONSEQUENTIAL DAMAGES.

Use of this product for any purpose other than its original intent, abuse of the product, and/or any modification to the original product is strictly prohibited by the manufacturer, John Blue Company. Any modification to the product should be approved by John Blue Company prior to use. John Blue Company will deny Warranty claims and liability in any situation involving misuse, abuse or modification.

Each new machine or component manufactured by John Blue Company through original buyer is warranted by John Blue Company to buyer and to any party or parties to whom buyer may resell, lease or lend the equipment to be free from defects in material and workmanship under normal use and service. This obligation of John Blue Company under this warranty is limited to the repair or replacement of defective parts or correction of improper workmanship of any parts of such equipment which shall within one year from the date of John Blue's original delivery thereof, be returned to John Blue's factory, transportation charges prepaid and which John Blue Company shall determine to its satisfaction upon examination thereof to have been thus defective. When it is impractical to return the defective parts of such equipment to John Blue's factory, then John Blue shall have no liability for the labor cost involved in repairing or replacing any such parts and shall be liable solely for supplying the material necessary to replace or repair the defective parts, provided that prior thereto John Blue Company shall have determined to its satisfaction that any such parts are thus defective.

This warranty shall not apply to any equipment which shall have been repaired or altered outside John Blue's factory in any way so as to affect its durability, nor which has been subjected to misuse, abuse, negligence or accident, or operated in any manner other than in accordance with operating instructions provided by John Blue Company. This warranty does not extend to repairs made necessary by the use of inferior or unsuitable parts or accessories, or parts or accessories not recommended by John Blue Company.

John Blue Company makes no warranties in respect to parts, accessories or components not manufactured by John Blue Company, same ordinarily being warranted separately by their respective manufacturers.

DIVISION OF ADVANCED SYSTEMS TECHNOLOGIES HUNTSVILLE, AL (256) 721-9090



John Blue Company

Division of Advanced Systems Technology

165 Electronics Blvd., Huntsville AL 35824

Telephone: (256) 721-9090 • Fax (256)-721-9091

Toll Free 1-800-253-2583

www.johnblue.com

YOUR LOCAL DEALER

