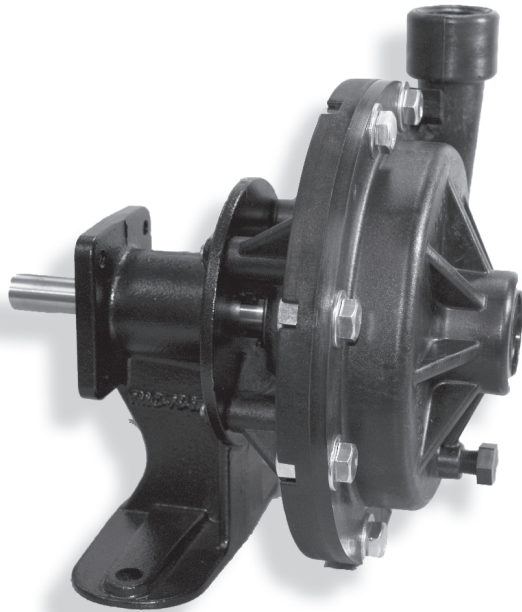




Polypropylene Frame Mounted Centrifugal Pump

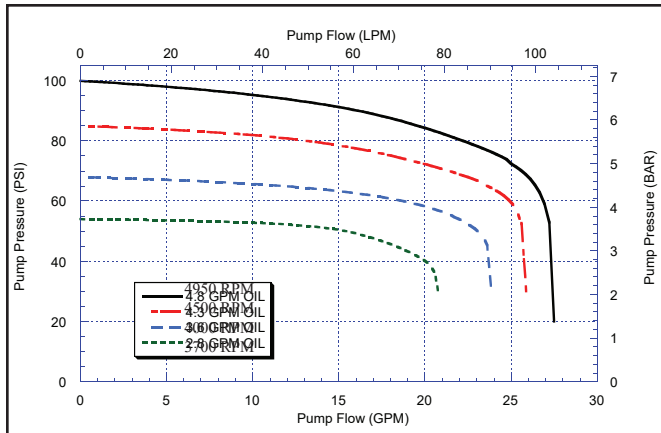


FMC-CW-75

- Suction 1" NPT x Discharge 3/4" NPT
- Max. Flow: 27 GPM (102 LPM)
- Max. Pressure: 100 PSI (6.9 BAR)
- Clockwise Rotation when Facing Shaft End
- Polypropylene Corrosion Resistant Construction
- Stainless Steel Shaft and Hardware
- Standard FKM Carbon/Ceramic or Optional Severe Duty Silicon Carbide Mechanical Seal

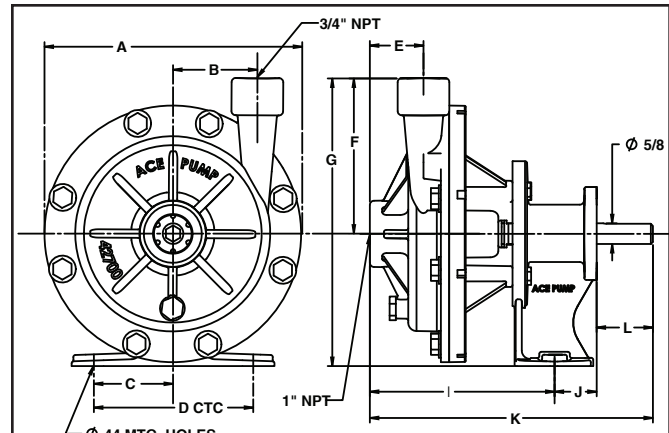
Maximum Fluid Temperature - 140° F (60° C)
Do Not Run Dry - Seal damage will result from running dry. Impeller damage may also occur if run dry for an extended period.
Do Not Run With Flow Shutoff For Extended Periods
 Running the pump with no flow for extended periods of time will result in excessive heat and pump failure. A continuous bypass is recommended for low flow applications.
Do not use with flammable liquids.

PERFORMANCE CHART



$$\frac{\text{Pump RPM}}{\text{Driveshaft RPM}} = \frac{\text{Drive Pulley Diameter}}{\text{Pump Pulley Diameter}}$$

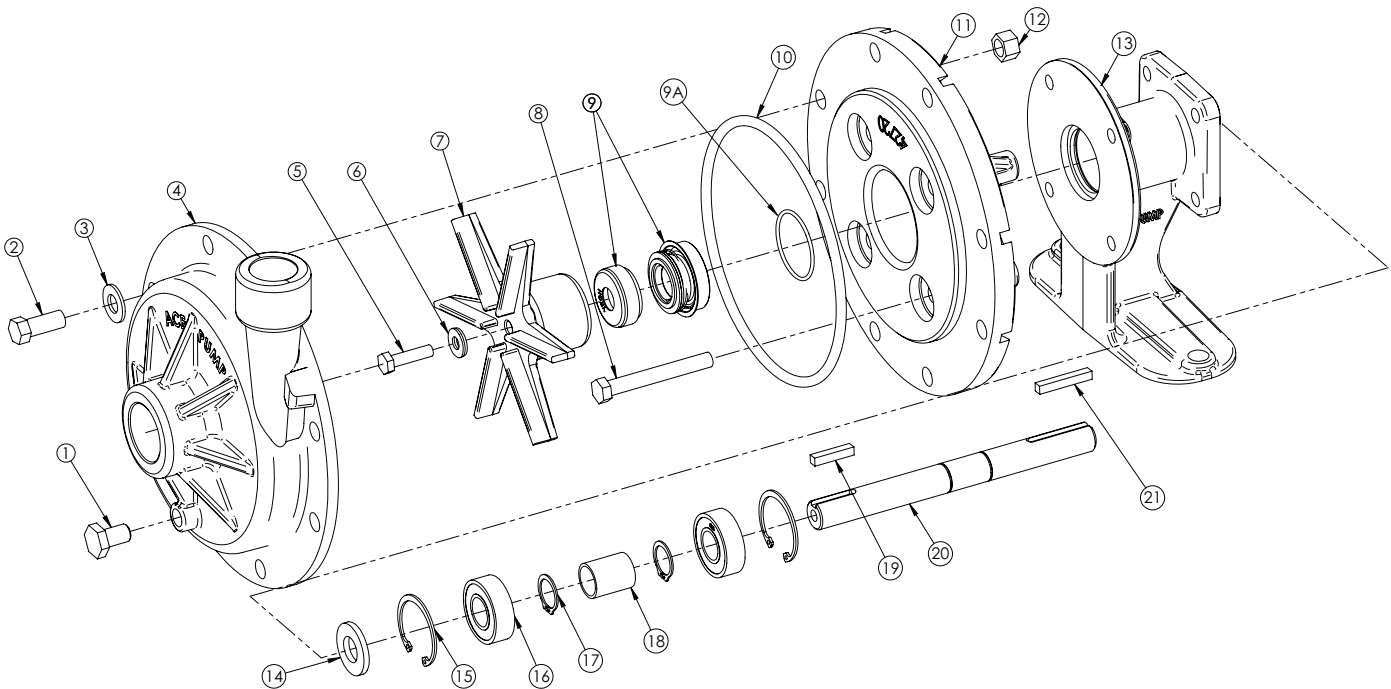
DIMENSIONS



	A	B	C	D	E	F	G	I	J	K	L
INCHES	7.75	2.55	2.63	5.25	1.62	4.70	8.69	5.58	1.18	8.55	1.70
MM	196.9	64.8	66.8	133.4	41.1	119.4	220.7	141.7	30.0	217.2	43.2



FMC-CW-75



REF. #	PART NO.	EDP #	DESCRIPTION	REQ.
1	BAC-53-P	41109	Pipe plug, 1/8" NPT, plastic	1
2	80250	80250	Cap screw, 3/8"-16 x 7/8", hex head	8
3	42701	42701	Washer, 3/8" flat	8
4	GE-12-75	42700	Volute, 3/4" x 1", polypropylene	1
5	42240	42240	Cap screw, 1/4"-28 x 1", hex, stainless steel	1
6①②	30028	30028	Washer, sealing	5
7	GE-26-75	42710	Impeller, with keyway, polypropylene	1
8	42238	42238	Cap screw, 5/16"NF x 2-1/2"	4
9①	BAC-7-75V	42730	Seal, 5/8", FKM/carbon/ceramic	1
9②	BAC-7SC-75V	42731	Seal, 5/8", FKM/silicon carbide (optional)	1
9A①②	40159	40159	"O" Ring, seal seat	1
10①②	40017	40017	"O" Ring, volute seal	1
11	GE-14-75	42720	Bracket, polypropylene	1
12	BAC-45	41010	Nut, hex, 3/8"	8
13	BAC-14-75-HYD	40293	Mounting frame	1
14	BAC-54	41130	Slinger	1
15	BAC-33	40810	Snap ring, internal, BAC-14 mounting frame	2
16	BAC-37	40870	Bearing, BAC-6 driven shaft	2
17	BAC-32	40790	Snap ring, external, BAC-6 driven shaft	2
18	BAC-32-S	40795	Spacer for BAC-6 shaft	1
19	41082	41082	Key, 3/16" x 3/16" x 15/16"	1
20	BAC-6-75-SS	40046	Shaft, 5/8" Driven shaft with keyway, stainless steel	1
21	BAC-50	41080	Key, 3/16" x 3/16" x 1-1/4"	1
①	RK-GE-75	60840	Repair kit for FMC-75-HYD series	-
②	RK-GESC-75	60841	Repair kit for FMC-75-HYD series with silicon carbide shaft seal	-