



Heavy Duty Frame Mounted Centrifugal Pump

FMC-200-X

- Suction 2" - Discharge 1-1/2"
- For High Volume Applications:
Capacity to 180 GPM
- Counterclockwise Rotation when Facing Shaft End
- 3/4" Diameter Stainless Steel Shaft
- Heavy Duty Bearings
- Standard Viton Carbon/Ceramic seal or Optional Severe Duty Silicon Carbide Mechanical Seal
- Chemical Resistant Valox® or Optional Cast Iron Impeller

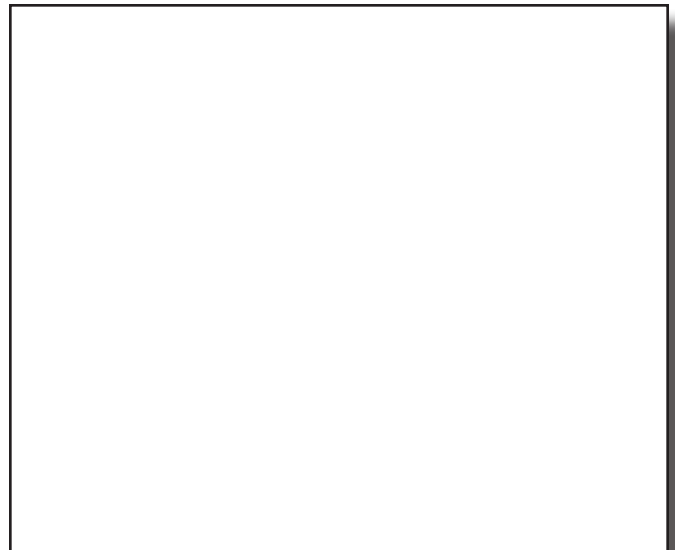
® Registered trademark of GE Plastics

PERFORMANCE CHART

PUMP SHAFT RPM	20	30	40	60	80	100	MAX
	PSI GPM	PSI GPM	PSI GPM	PSI GPM	PSI GPM	PSI GPM	
2800	100	50	-	-	-	-	1.7
3200	125	105	97	-	-	-	3.2
3600	140	130	121	-	-	-	4.0
4000	160	145	138	105	-	-	5.3
4600	180	170	163	150	70	40	7.5

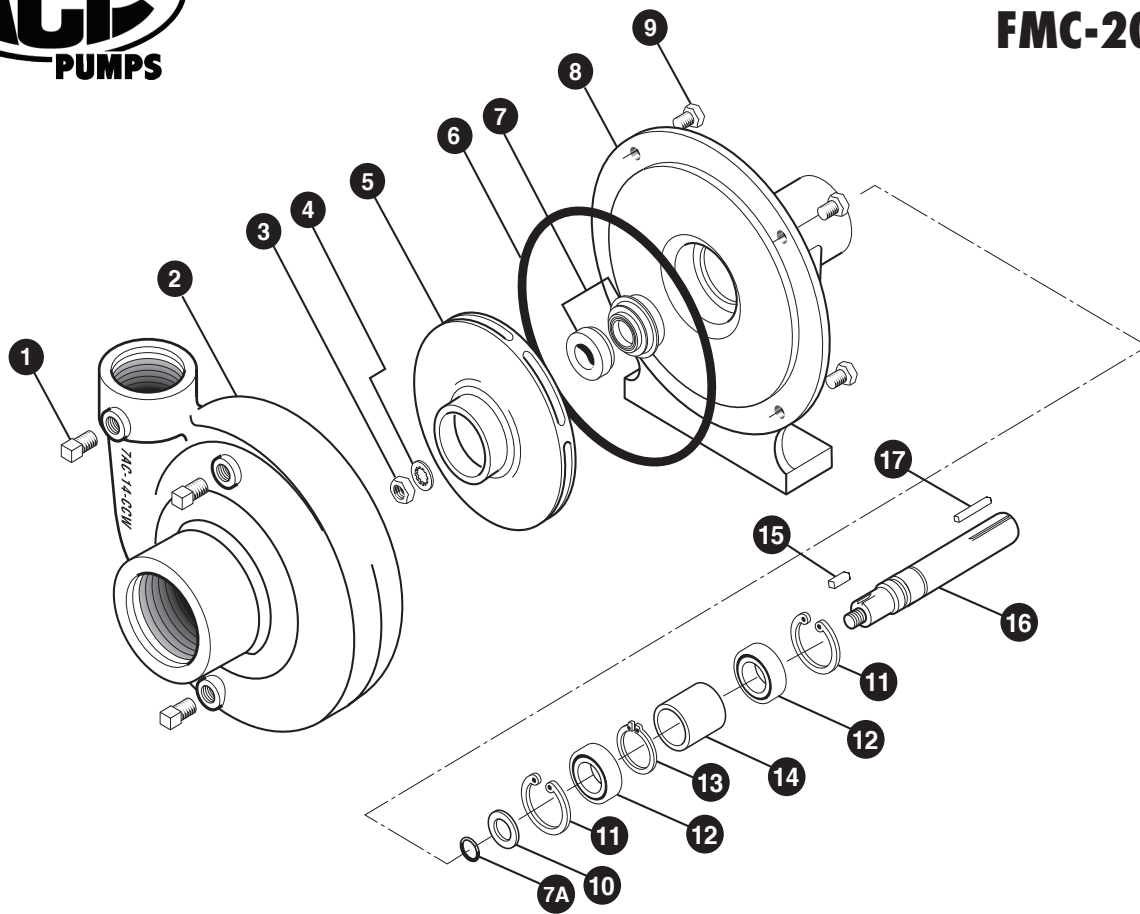
$$\frac{\text{Pump RPM}}{\text{Driveshaft RPM}} = \frac{\text{Drive Pulley Diameter}}{\text{Pump Pulley Diameter}}$$

DIMENSIONS





FMC-200-X



REF. #	PART #	EDP #	DESCRIPTION	REQ.
1	BAC-53	41110	Pipe plug, 1/8" NPT	4
1	41120	41120	Pipe plug, 1/8" NPT, stainless steel (optional)	4
2	7AC-14-CCW	41526	Volute, 2" x 1-1/2", cast iron	1
3	BAC-23-A	40391	Nut, 3/8" NF Hex, cad plated locknut	1
4	BAC-24-HYD-SS	40400	Washer, 3/8", stainless steel	1
5	BAC-26-200-P	40434	Impeller, 5-1/2" dia., extended keyway, thermoplastic	1
5	BAC-26-200-CI	40433	Impeller, 5-1/2" dia., extended keyway, cast iron (optional)	1
6 ^{①②}	BAC-4A	40005	"O" Ring for BAC-12 volute seal	1
7 ^①	BAC-7V	40151	Seal, Viton mechanical seal (includes 40160 "O" Ring)	1
7 ^②	BAC-7SC	40152	Seal, Silicon carbide mechanical seal (includes 40160 "O" Ring) (optional)	1
7A ^{①②}	40160	40160	"O" Ring for BAC-6 shaft	1
8	BAC-14X-F	40309	Mounting frame, -X model pumps	1
9	40930	40930	Cap screw, 3/8" NC x 3/4" Hex head, stainless steel (optional)	4
9	40950	40950	Cap screw, 3/8" NC x 3/4" Hex head	4
10	BAC-54	41130	Slinger	1
11	BAC-33X	40812	Snap ring, internal, BAC-14 mounting frame	2
12	BAC-37X	40872	Bearing, BAC-6 driven shaft	2
13	BAC-32X	40792	Snap ring, external, BAC-6 driven shaft	1
14	BAC-32X-S	40796	Spacer for BAC-6 shaft	1
15	BAC-25	40425	Key, 1/8" x 1/8" x 13/16", extended keyway	1
16	BAC-6X-200-SS	40054	Shaft, 3/4" driven, extended keyway, stainless steel	1
17	BAC-50	41080	Key, 3/16" x 3/16" x 1-1/4"	1
①	RK-FMC	52700	Repair kit for FMC series	-
②	RK-FMCS	52706	Repair kit for FMC series with silicon carbide shaft seal	-